

ALLDAY  
& MILLER



Jollys Lane, Hayes, UB4 9NS  
£485,000

3 2 1 C



## Jollys Lane, Hayes, UB4 9NS

**£485,000**

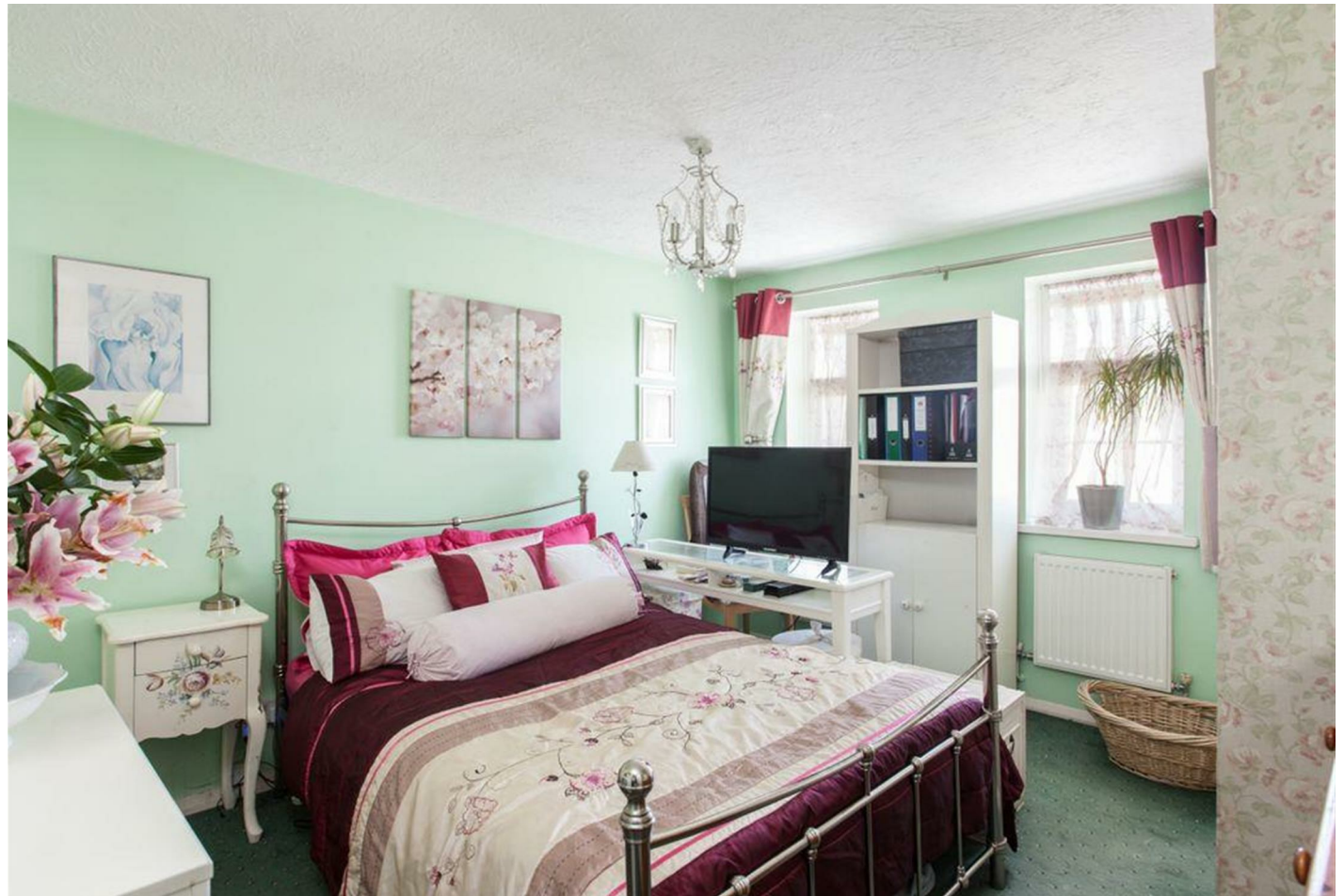
- Three Double Bedroom Semi-Detached Home
- A Stones Throw Away From Amenities
- Private Rear Garden
- Close To Commended Schools And Universities
- Within Close Proximity To Hayes Town Centre
- Situated In A Sought-After Residential Area
- Extended To The Rear & Loft
- Off Street Parking
- Nearby Hayes & Harlington Train Station
- Good Condition

## Description

The ground floor benefits from an entrance hall, living room, an extended kitchen diner. To the first floor there is a master bedroom and en-suite, a second double bedroom and family bathroom. To the loft there is a generous sized room with ample space for a double bed and furniture. The rear of the property benefits from a well looked after lawn and there is also a secure side entrance.

## Situation

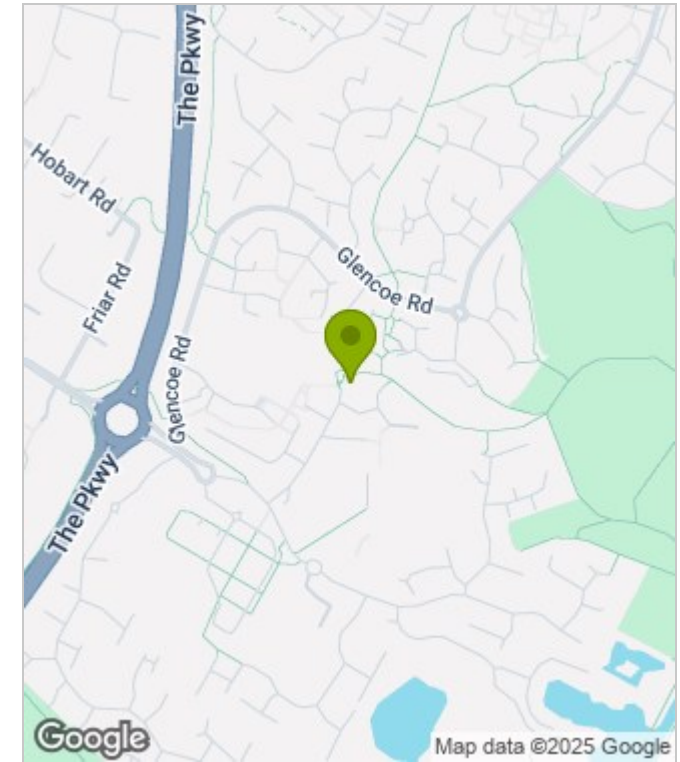
Jollys Lane is a popular residential and quiet cul de sac situated in Yeading. This location offers easy access to a variety of amenities including bus links, the M4/A40 road links (providing access to London and The Home Counties), Heathrow Airport, a number of local shops and big superstores. The new Elizabeth Line runs from Hayes & Harlington Station, making the commute into central London a breeze.



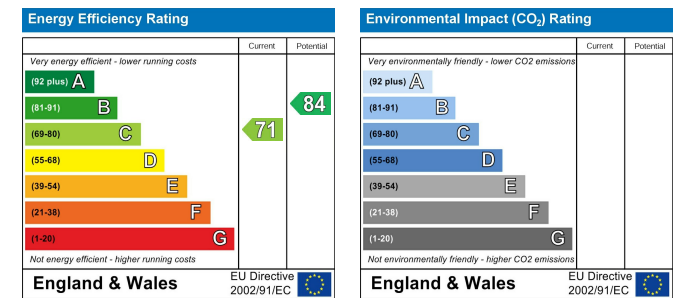
## Floor Plans



## Area Map



## Energy Performance Graph



These particulars, whilst believed to be accurate are set out as a general outline only for guidance and do not constitute any part of an offer or contract. Intending purchasers should not rely on them as statements of representation of fact, but must satisfy themselves by inspection or otherwise as to their accuracy. No person in this firm's employment has the authority to make or give any representation or warranty in respect of the property.